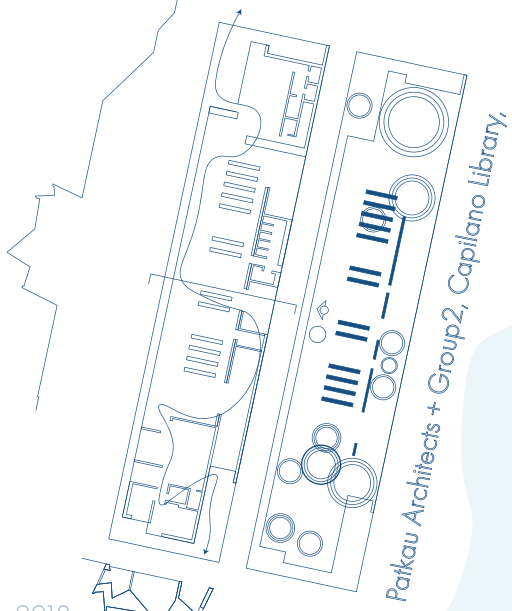


THE POSSIBILITY OF A CITY

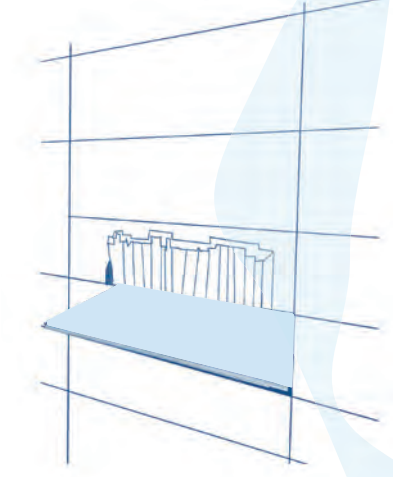
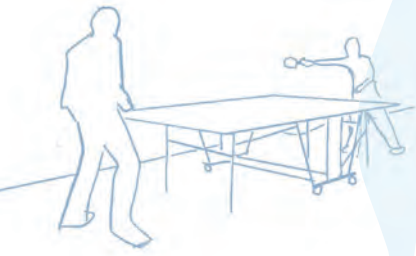
MERGE_2023_0192
STUIDO 04
HNIN PWINT KHAING

" I ransack public libraries, and find them full of sunk treasure." Virginia Woolf

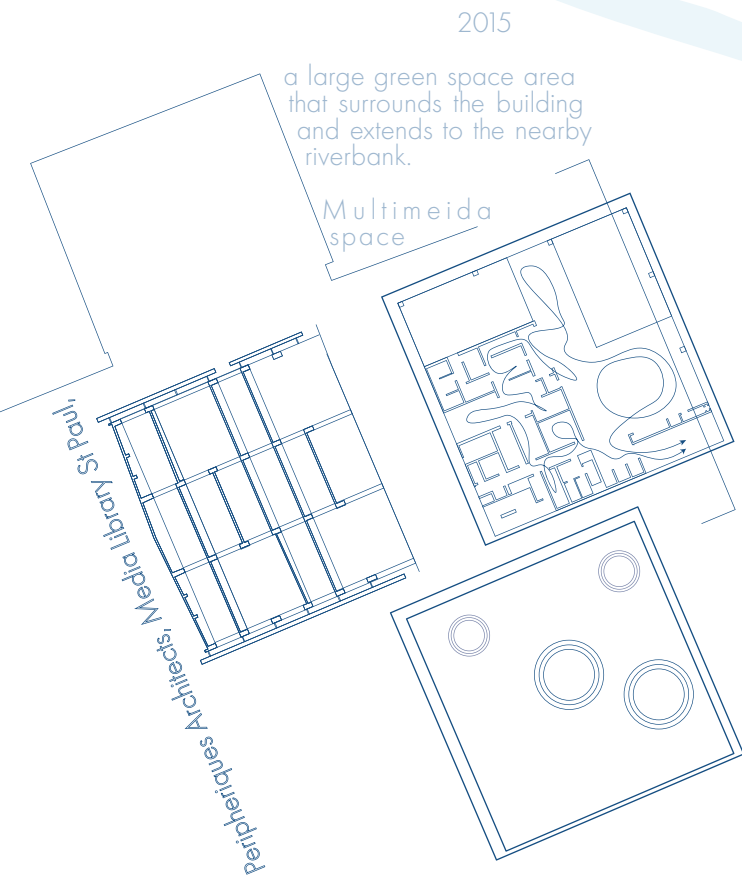


2018
Public library to promote literacy, education and access to information in the community.

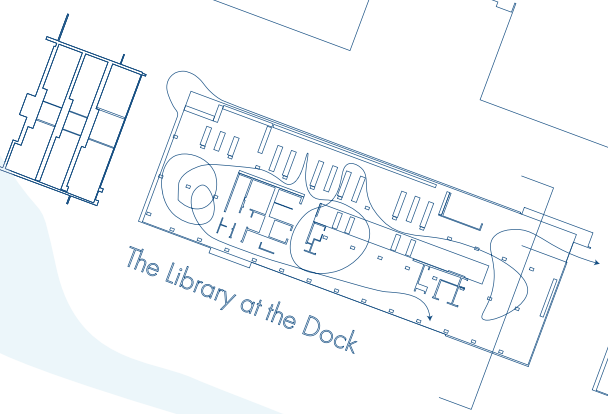
Each of the three peaks responds to scale, function, natural light, and view.



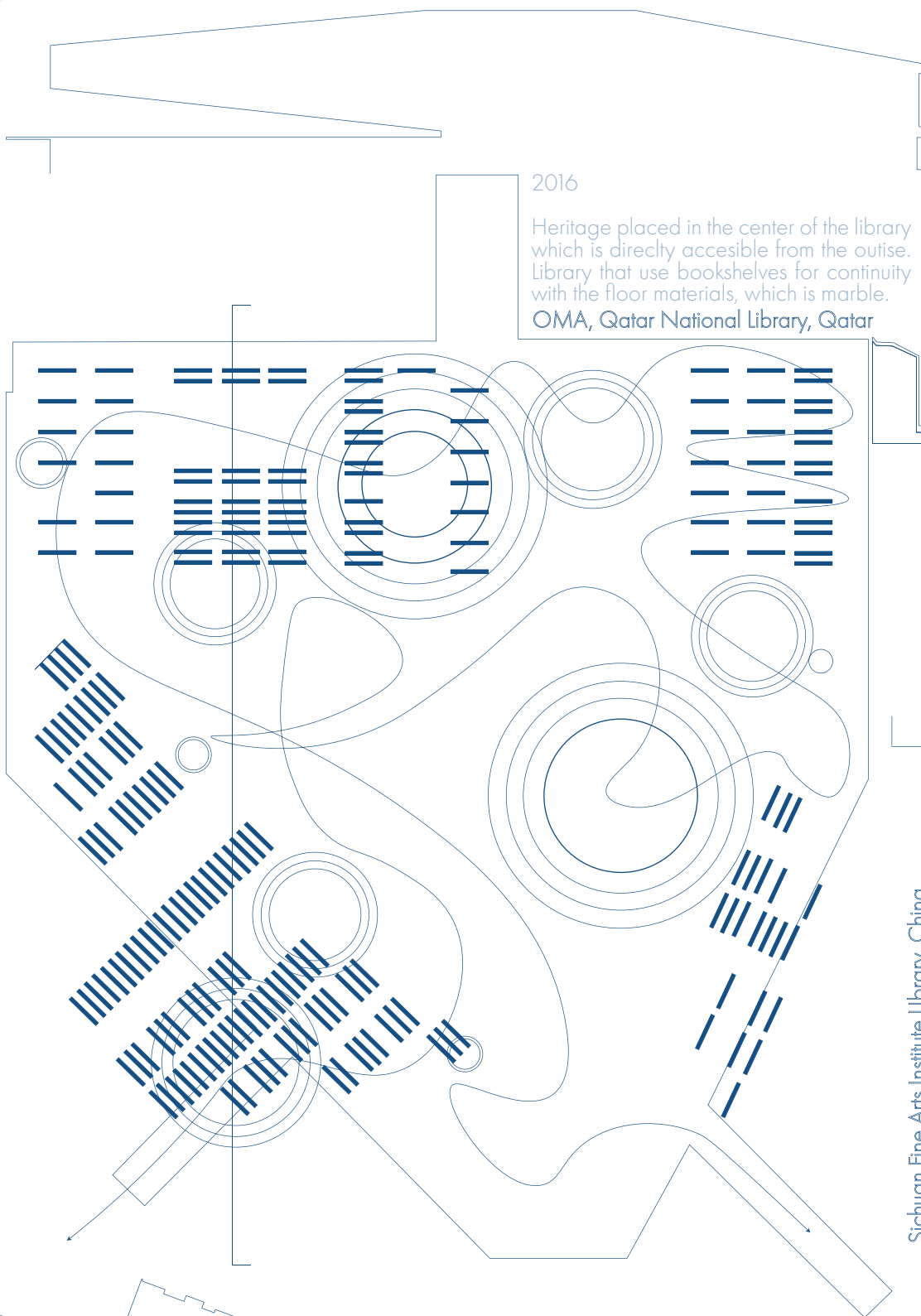
2014
Roof garden open to public, range of planting. Views of the city skyline and waterfront.
It also have a range of activities such as children's programs, workshop and makerspace like 3d printing.



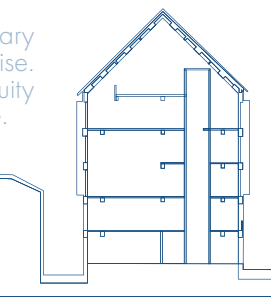
2015
a large green space area that surrounds the building and extends to the nearby riverbank.
Multimedia space



2015

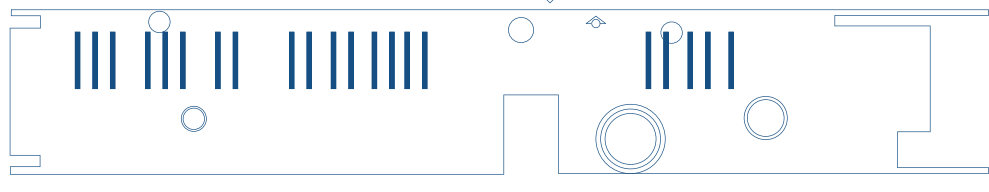


2016
Heritage placed in the center of the library which is directly accessible from the outside. Library that use bookshelves for continuity with the floor materials, which is marble.



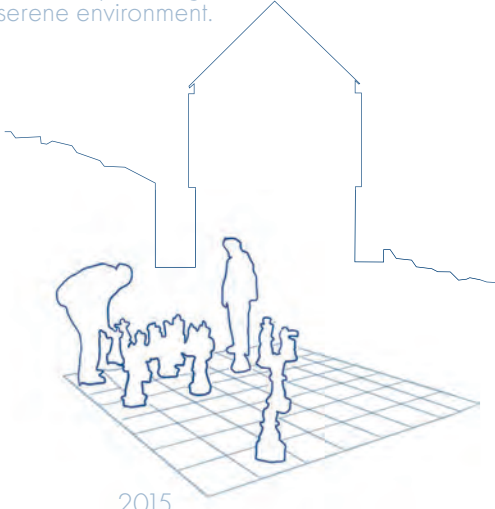
Sichuan Fine Arts Institute Library, China

1:1000 @ A3



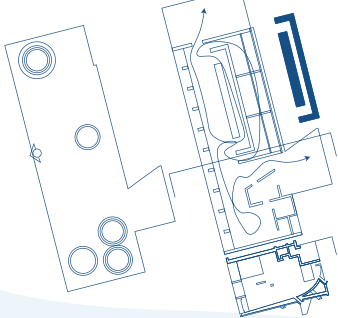
2009
smaller gardens throughout the site, providing visitors with a tranquil and serene environment.

Sliding tray from
bookshelves, view to the river
zoning out in the park, voicerecording in a
recording room, table tennis, chessboard, painting with
friends, quiet zone to read is what my
experiences of library



2015

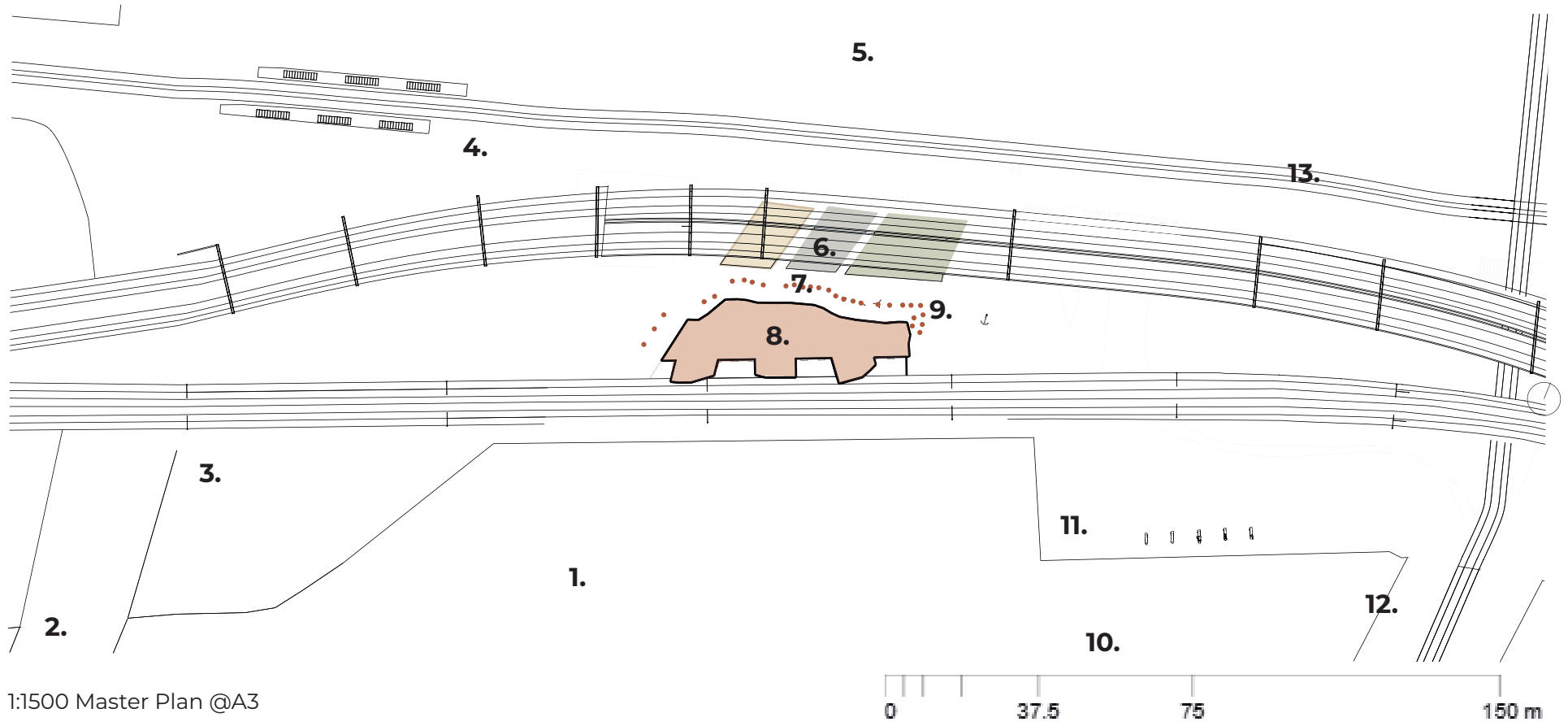
Distinctive sloping roof that mimics the surrounding dunes and sand hills



Vector Architects, Seashore

THE POSSIBILITY OF A LIBRARY

MERGE_2023_0192
STUIDO 04
HNIN PWINT KHAING



1:1500 Master Plan @A3

- 1. Yarra River
- 2. Batman Park and Sealife Bridge
- 3. Sealife Aquarium
- 4. Flinders Street

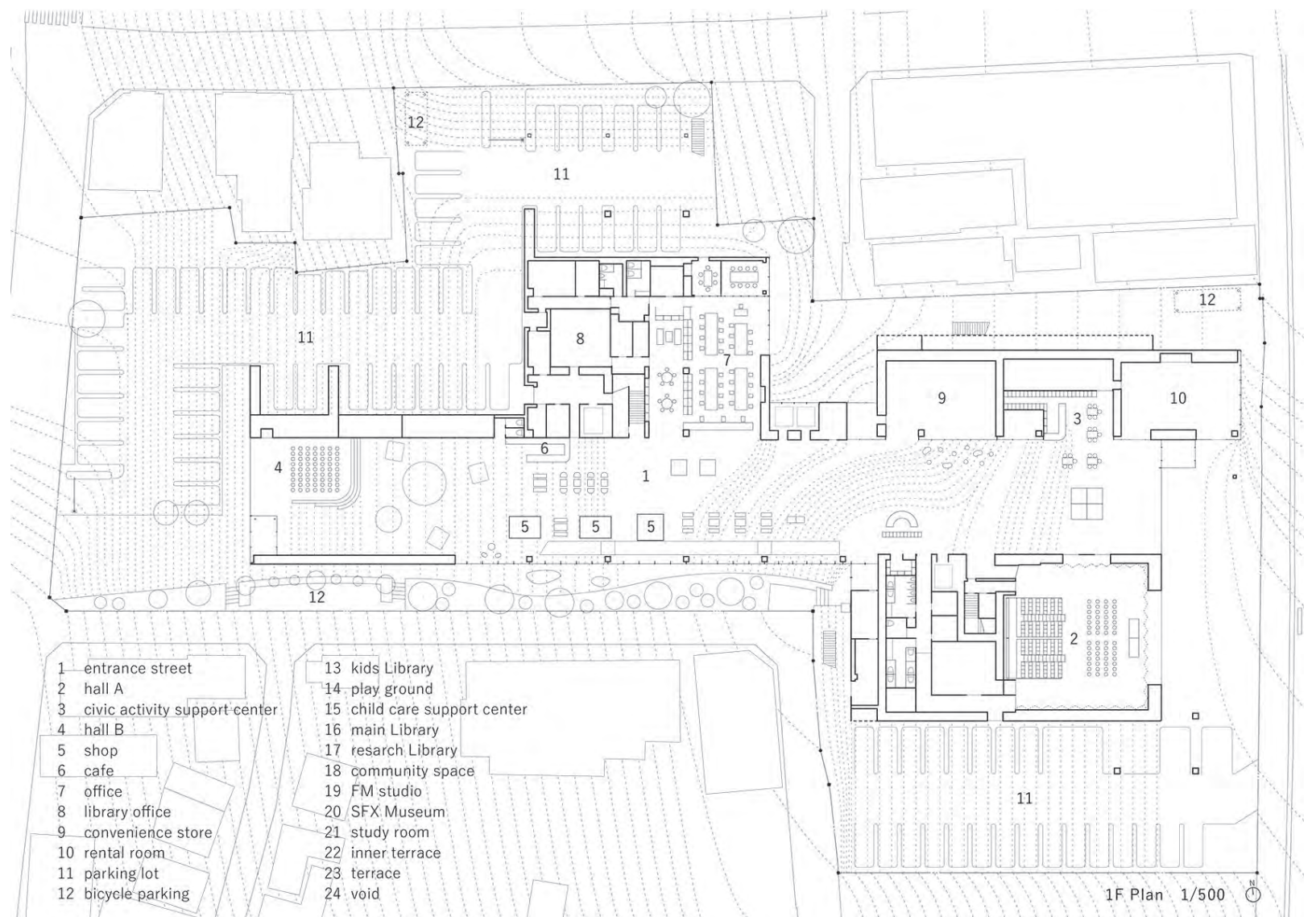
- 6. Caterian transition path
- 7. Aboriginal Timber
- 8. Main Library
- 9. Enterprize Park
- 10. Crown Tower infront of Enterprize

- 11. Connection to Queens Bridge
- 12. Queens Bridge
- 13. Towards Flinders Street Station

- Main Library
- Cafeteria spaces
- Cafeteria
- Donation Zone

Photos of Sukagawa by Unemori Architects





First Floor Plan of Sukagawa by Unemori Architects

SENTRUM by Atelier Oslo, Lund Hagem



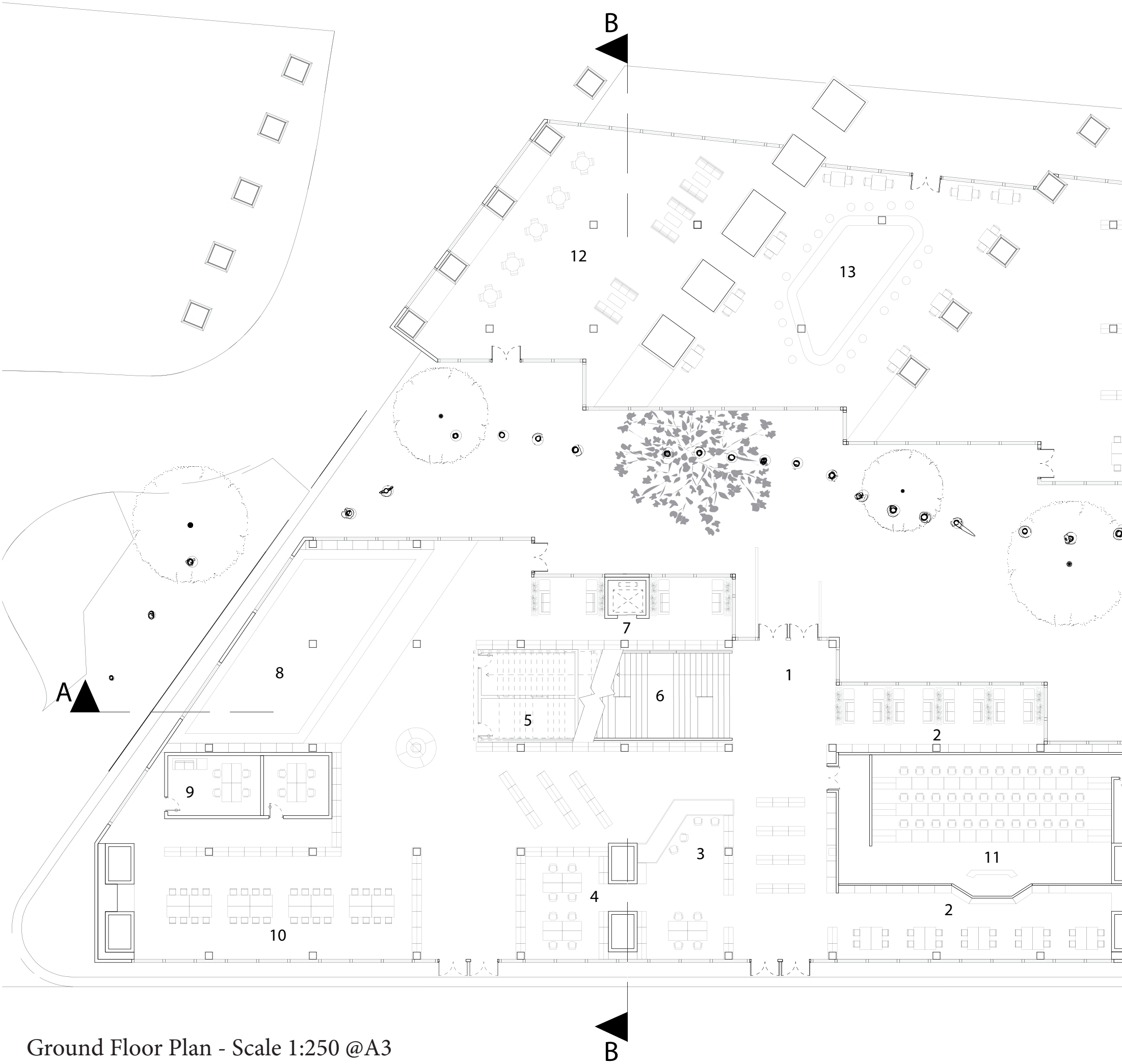
H-I Library: Harmony and Inclusivity

Hi Library design concept - Acceptance and Inclusivity: Harmony in the City

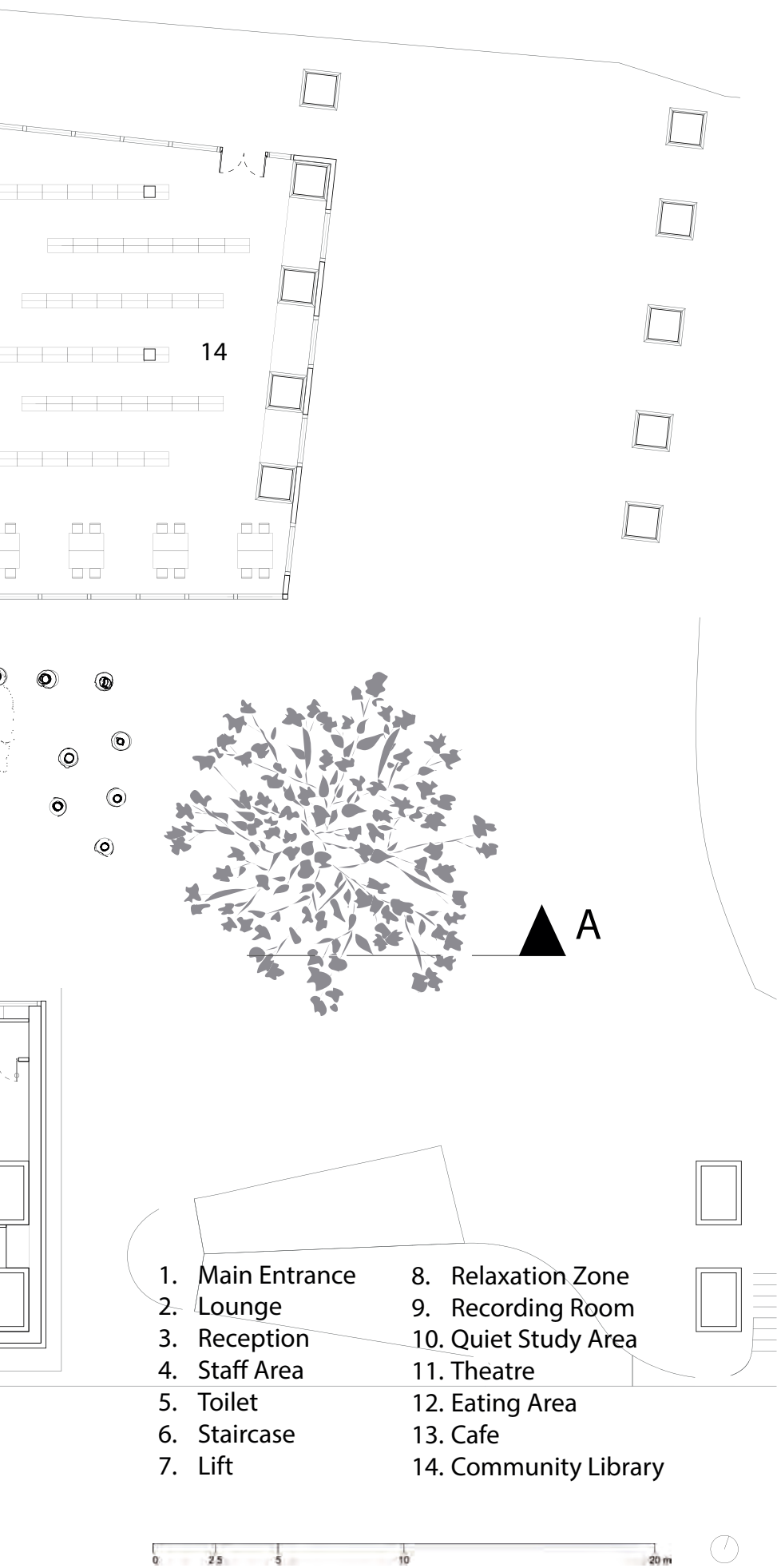
The idea of acceptance is the central focus of my design. I wanted my design to primarily feel welcoming and interesting.

In order to make the building feel welcoming, I will blend my design well with the surrounding and pay respect to local history therefore the residents will not feel uncomfortable when they see my development

In order to make my building more interesting I will incorporate different design strategies to create an open and versatile space for people from all walks of life. This is a design approach that prioritizes a sense of belonging and unity within the urban landscape, where people could connect, learn, and enjoy.



Ground Floor Plan - Scale 1:250 @A3

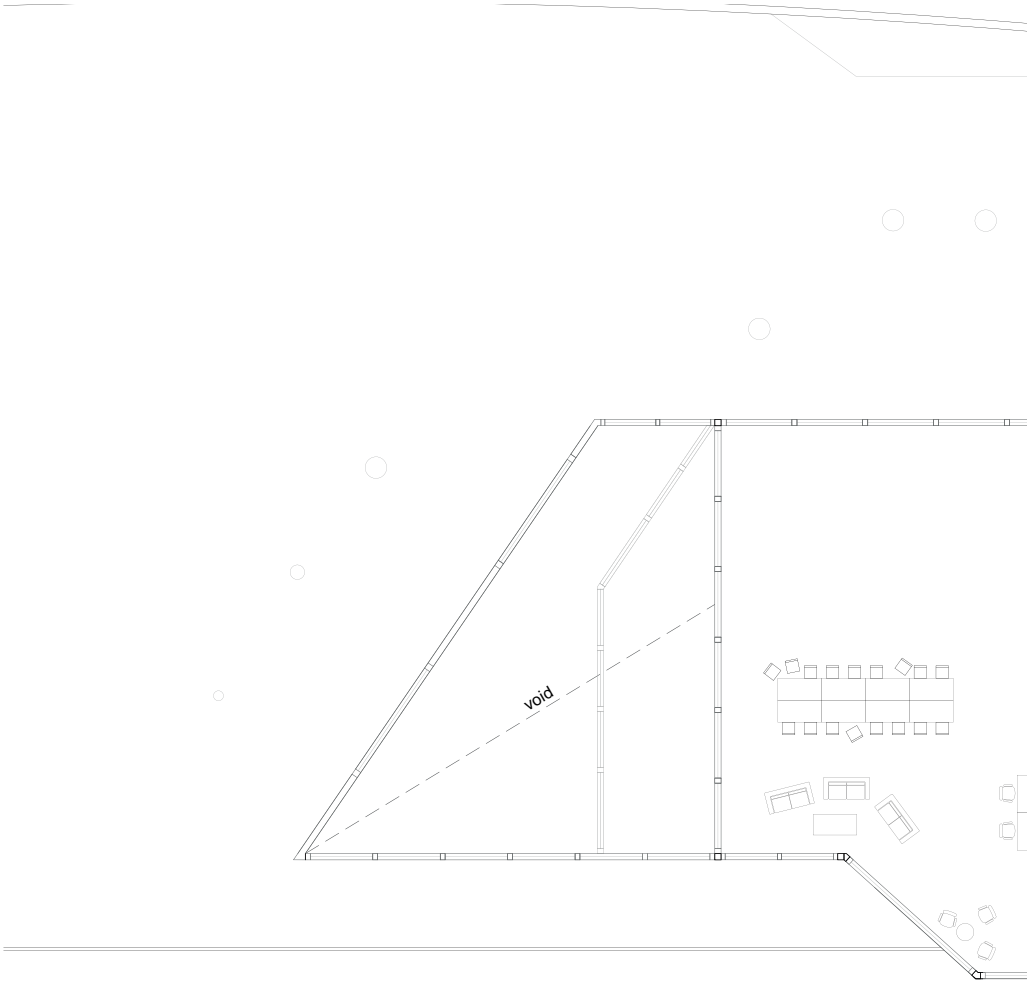


Internal Render - Ground Floor Staircase



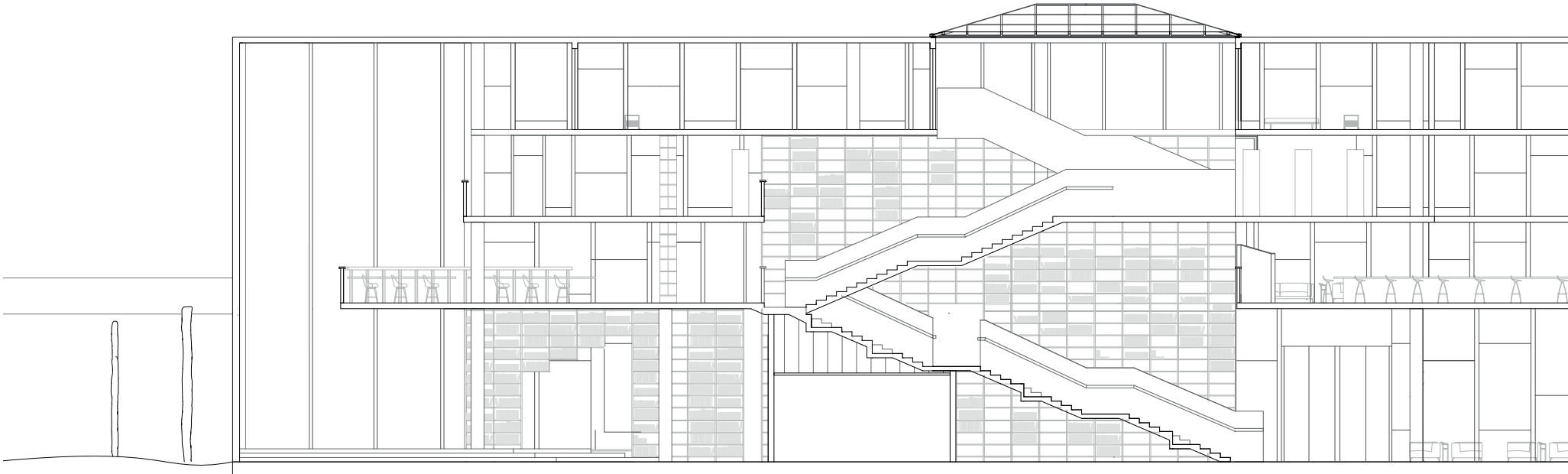


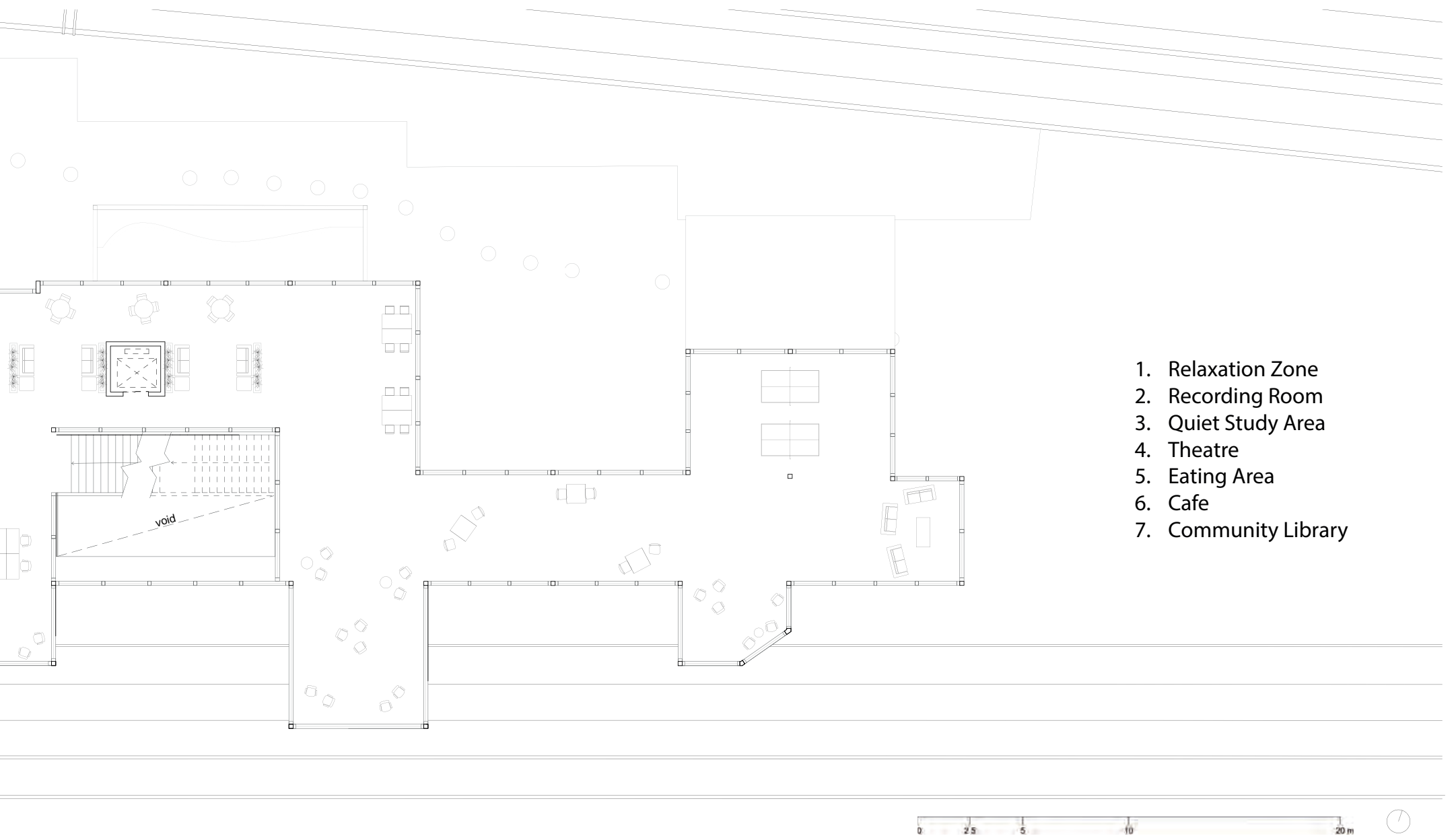
Internal Render - Cafe Area



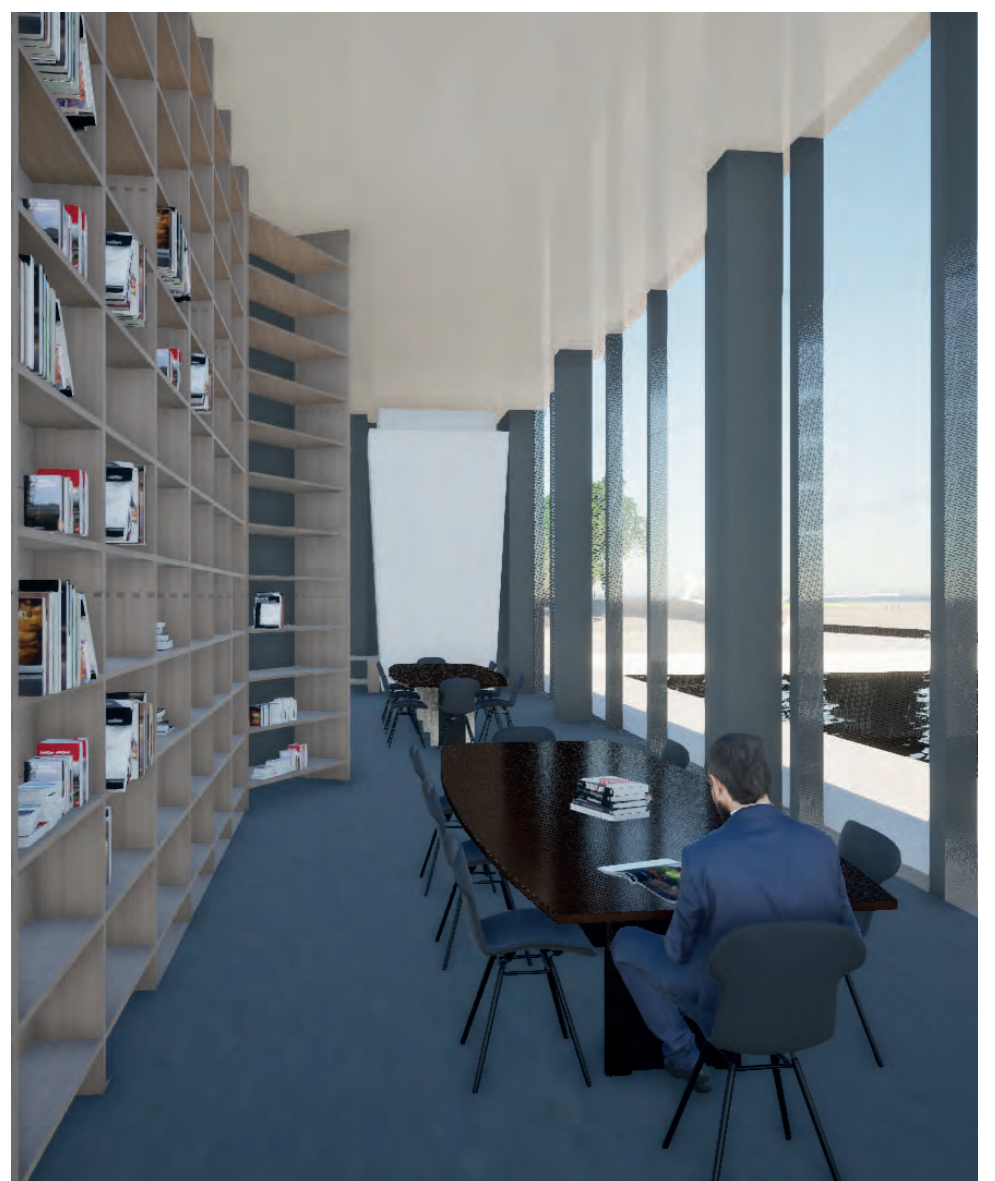
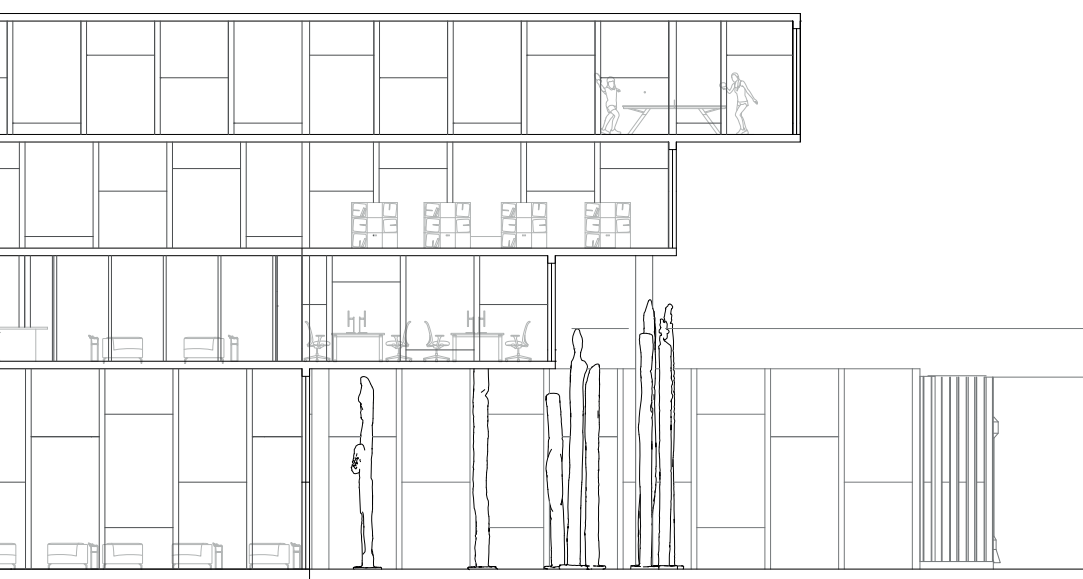
Level 3 Plan - Scale 1:250 @A3

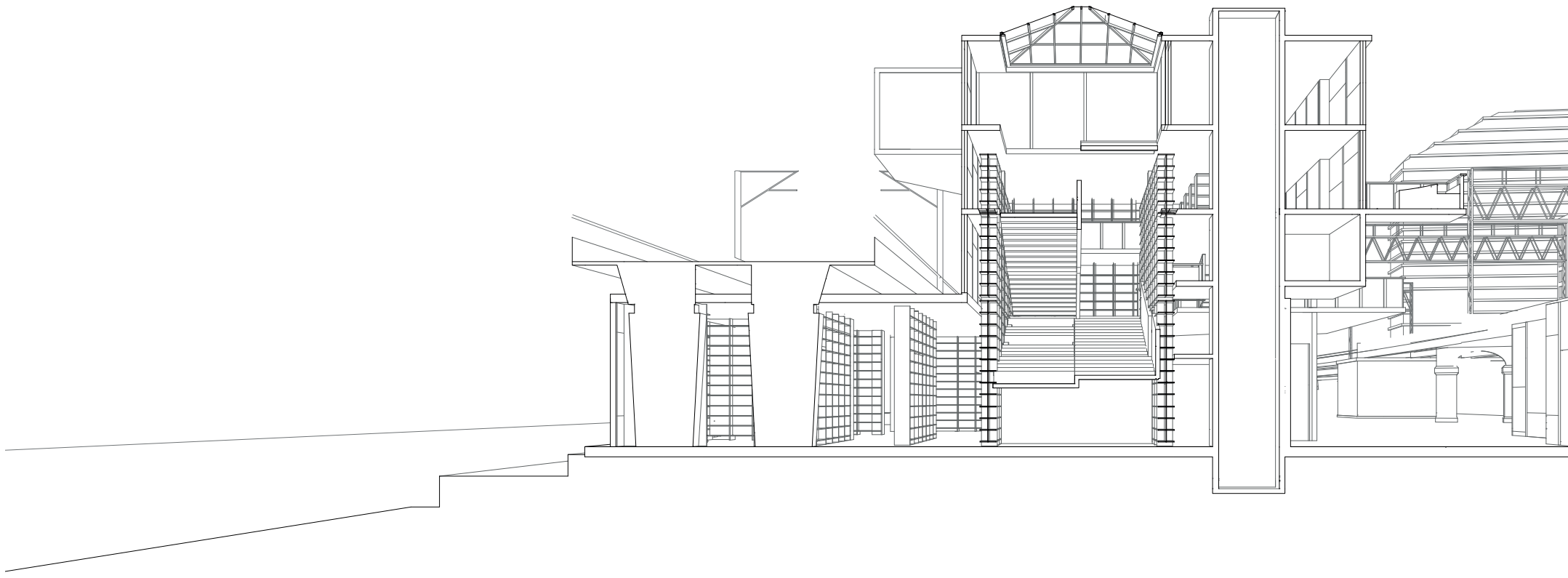
Section A - East-West - Scale 1:200 @A3



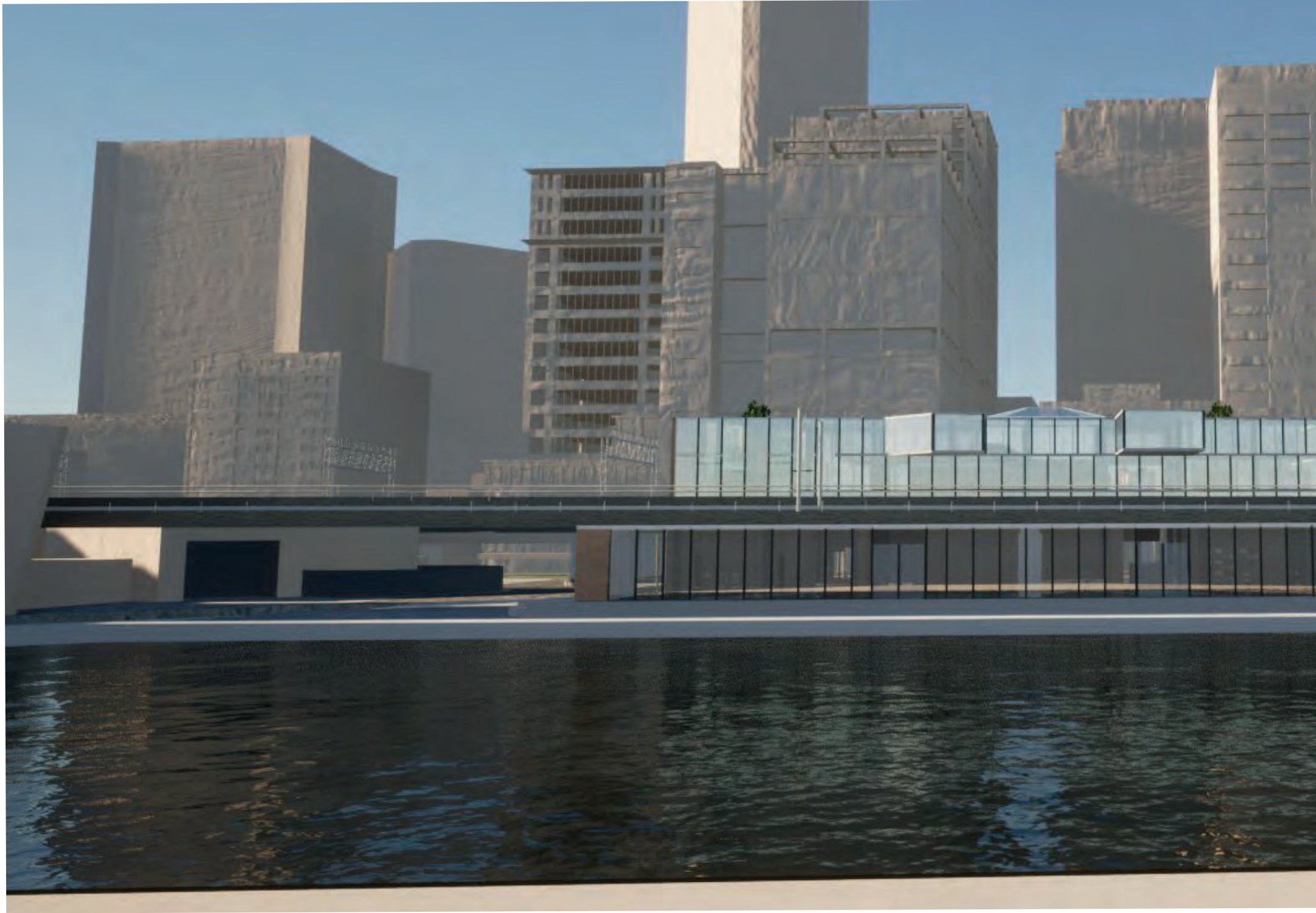


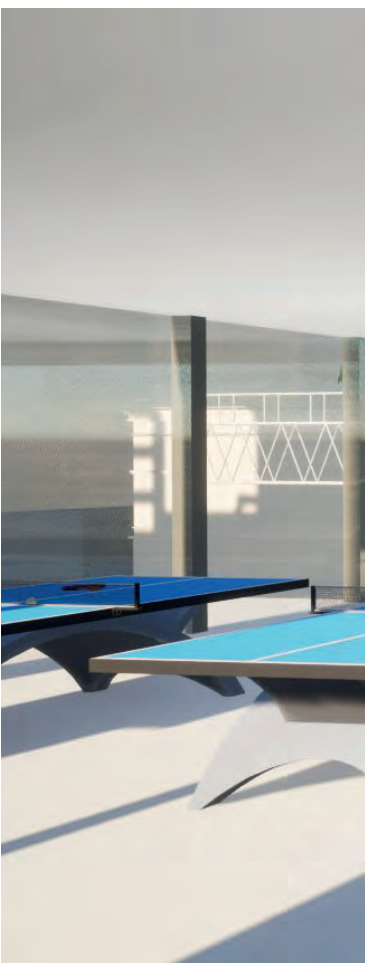
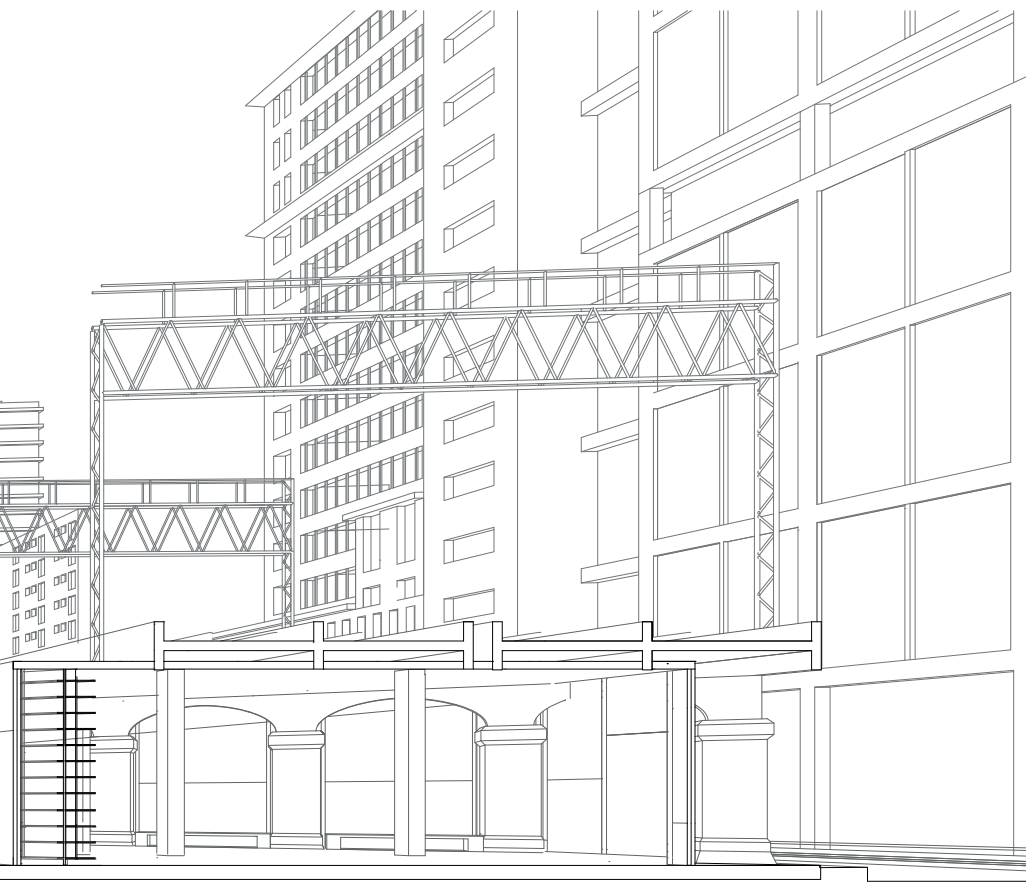
Internal Render - Study Space to the Yarra River



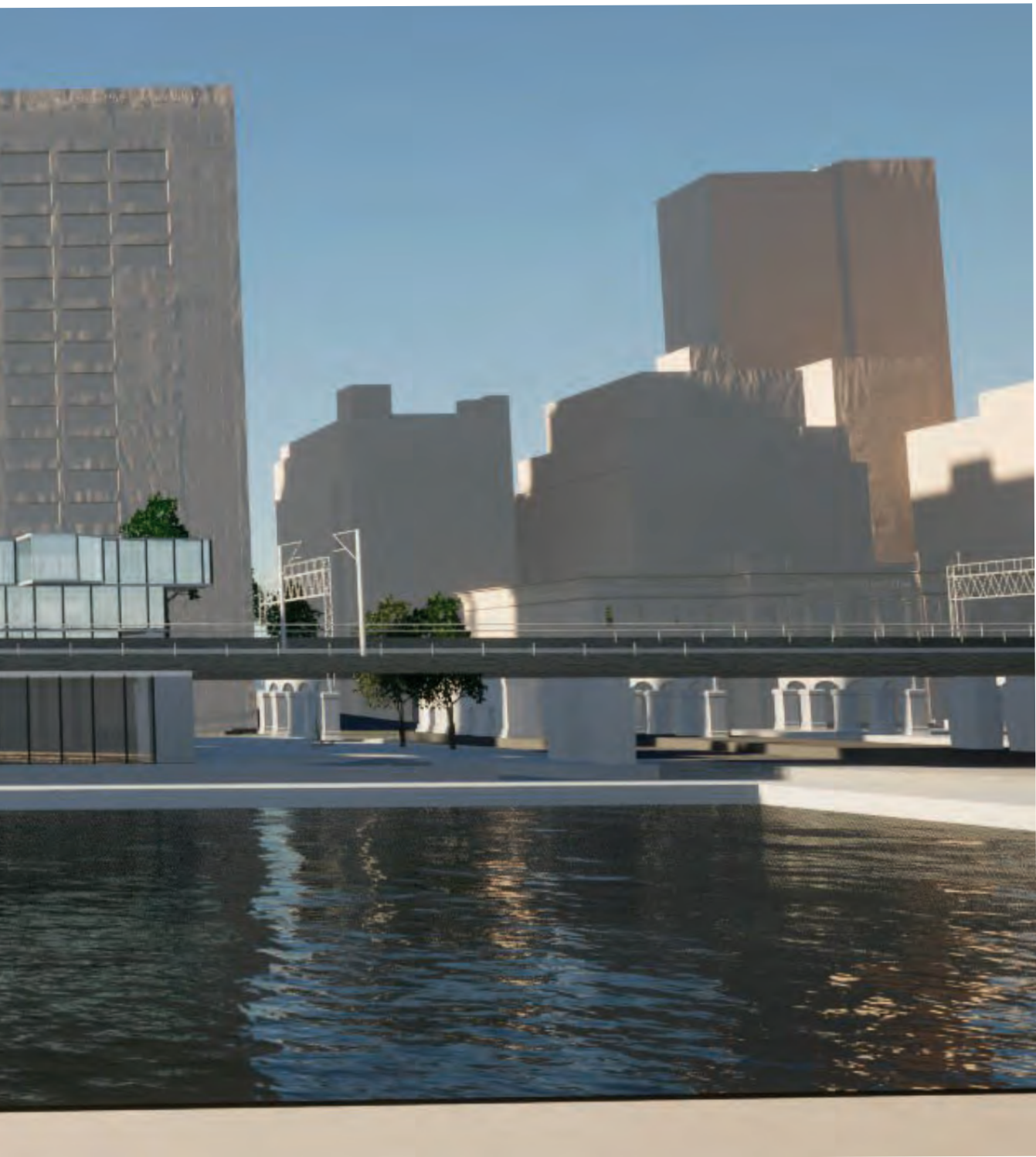


Section B - Perspective North-South - Scale 1:200 @
A3

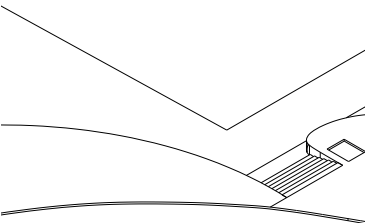




External Render - South Elevation



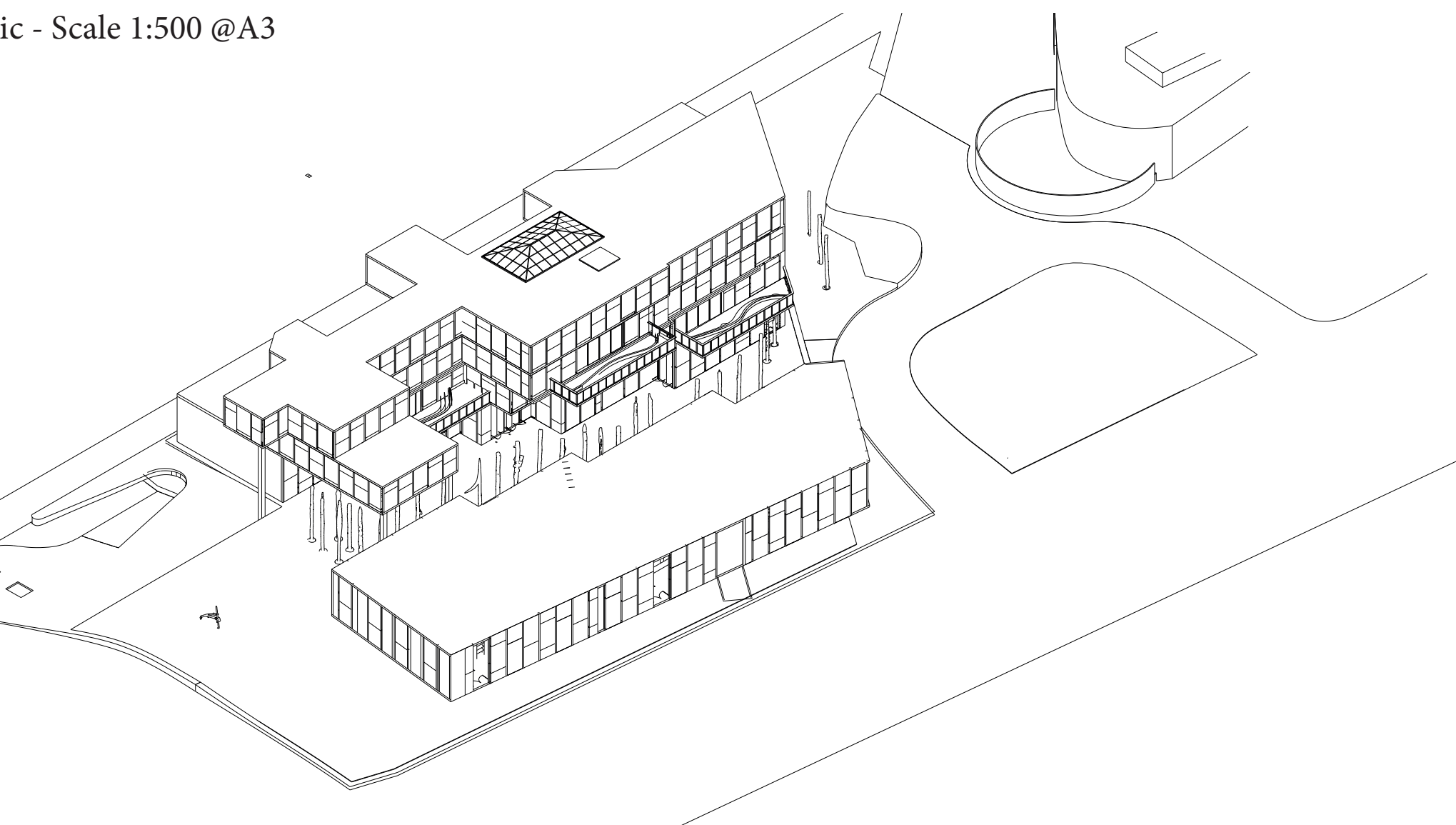
North-East Isonetr

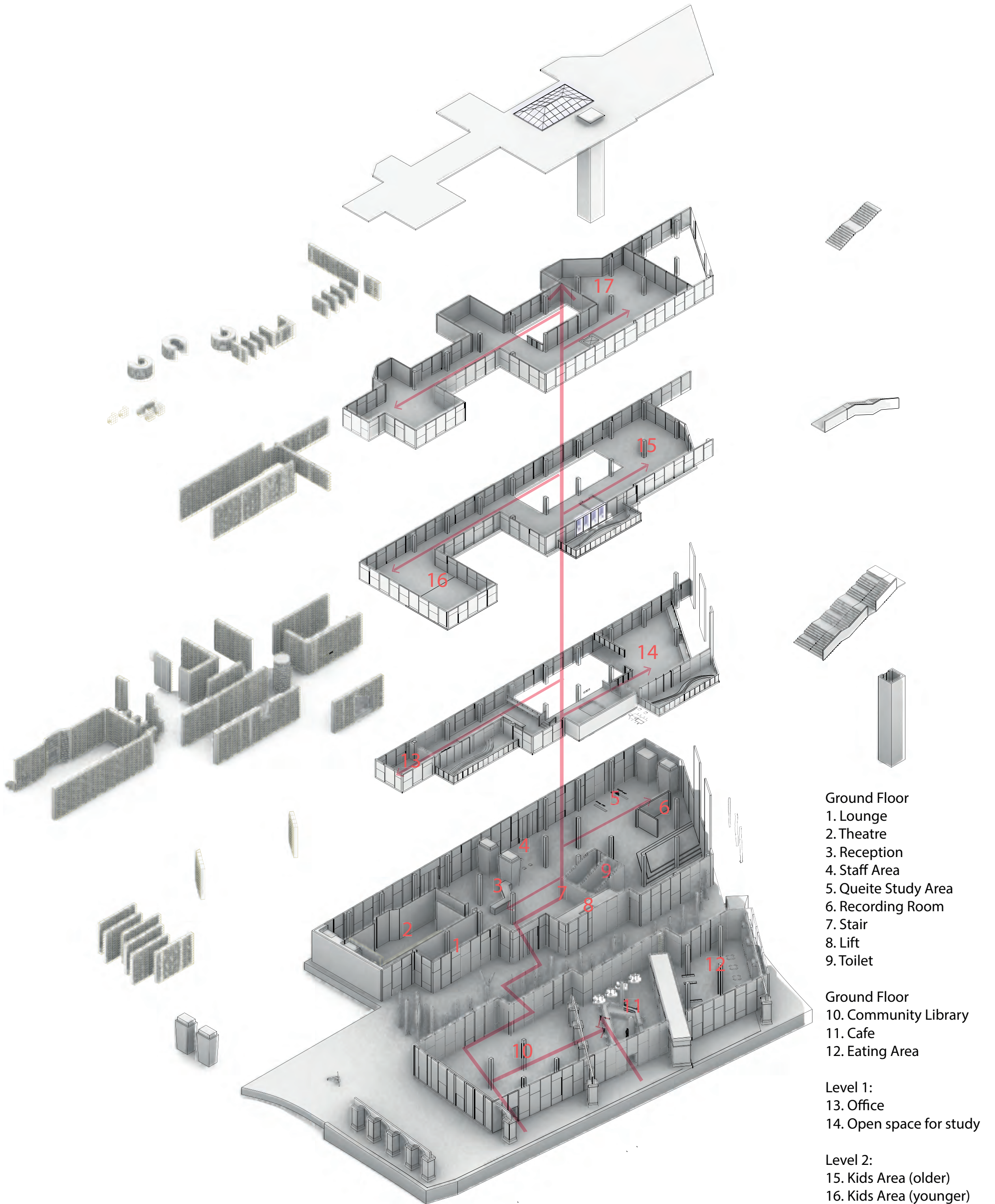




Level 3 Activities Space

ic - Scale 1:500 @A3

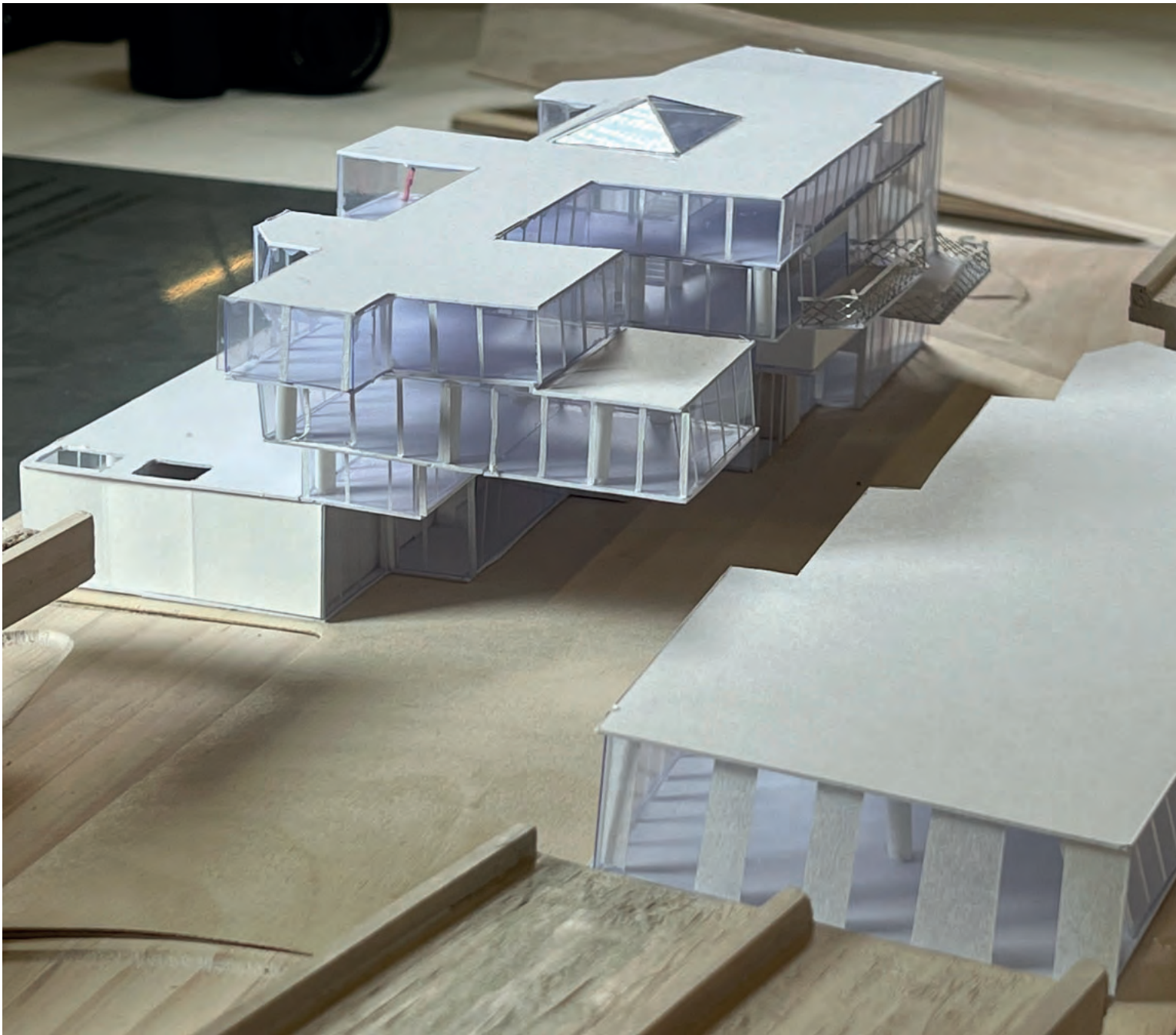




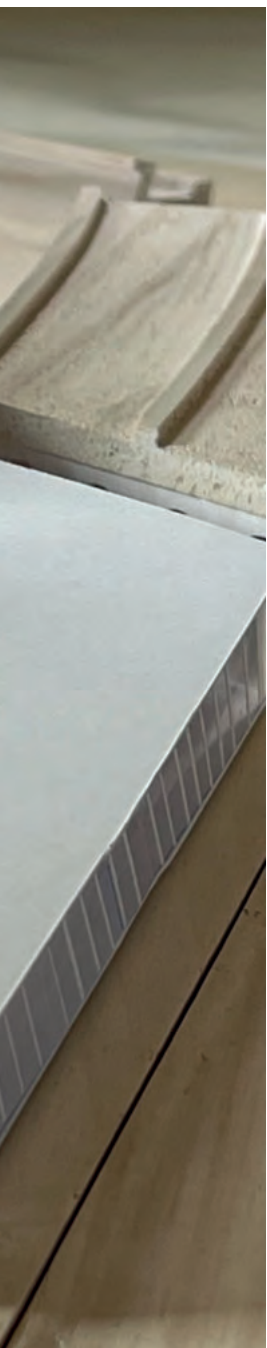
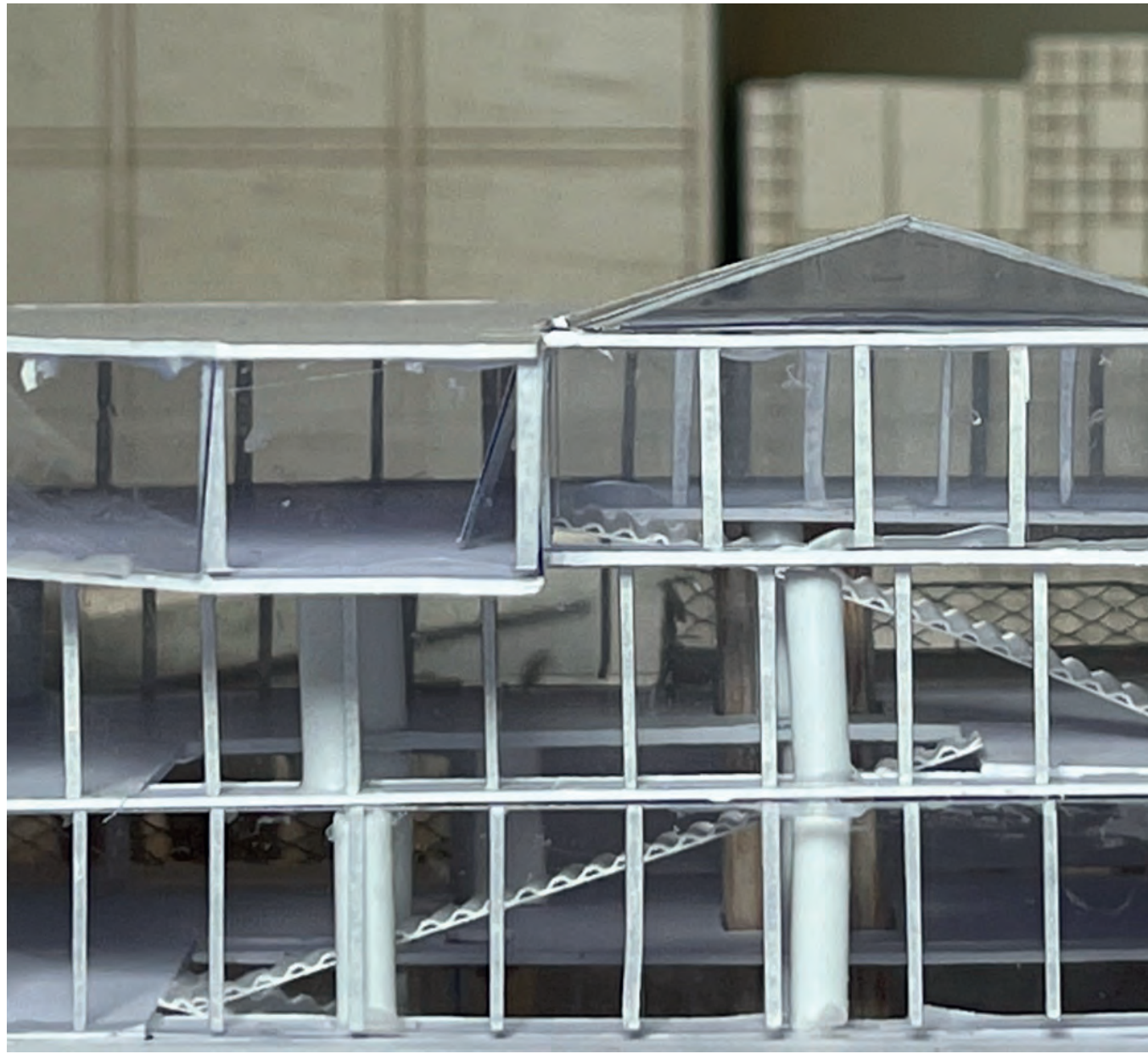
Exploded Isometric - Scale 1:500 @A3



South-West Corner



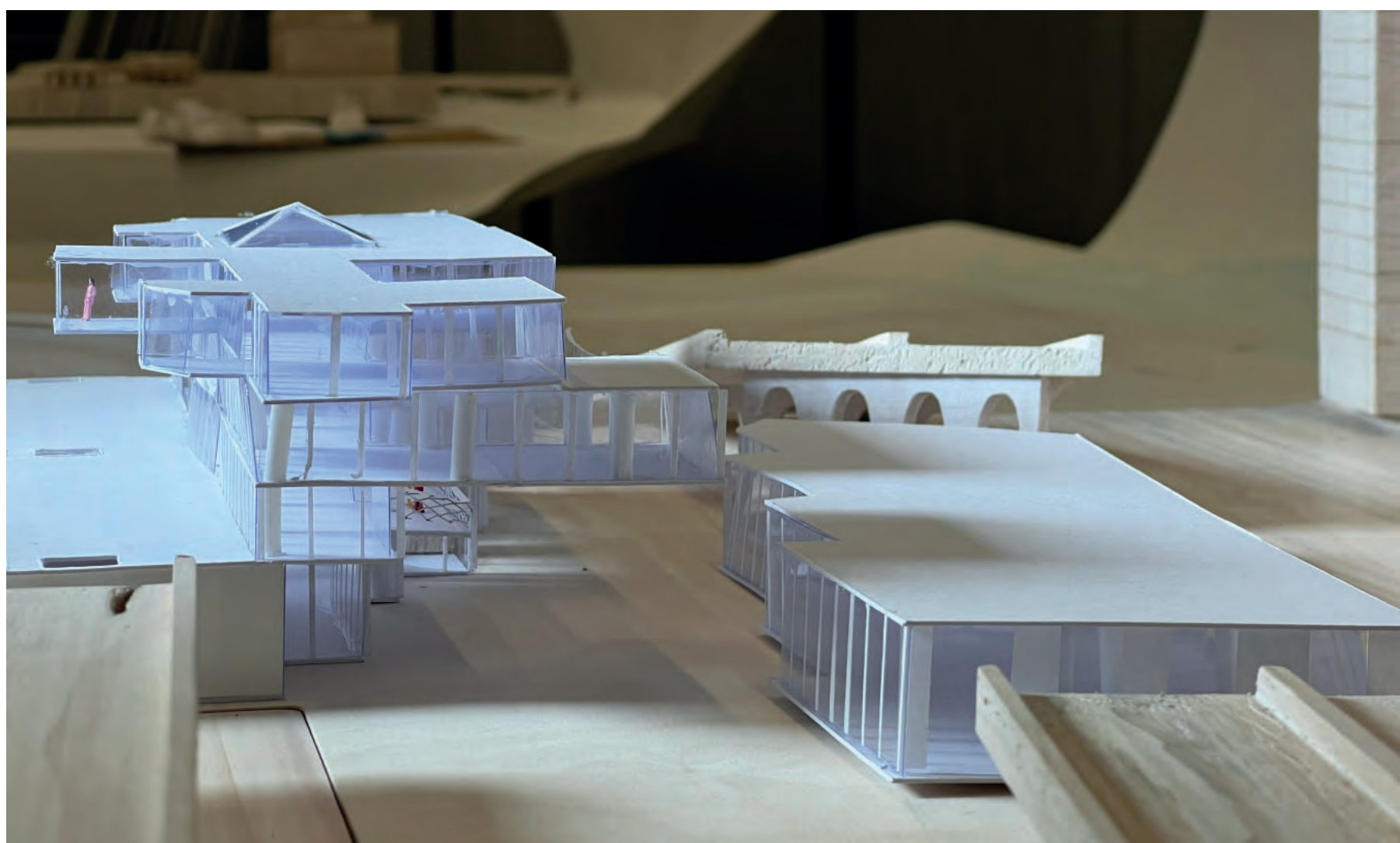
ner

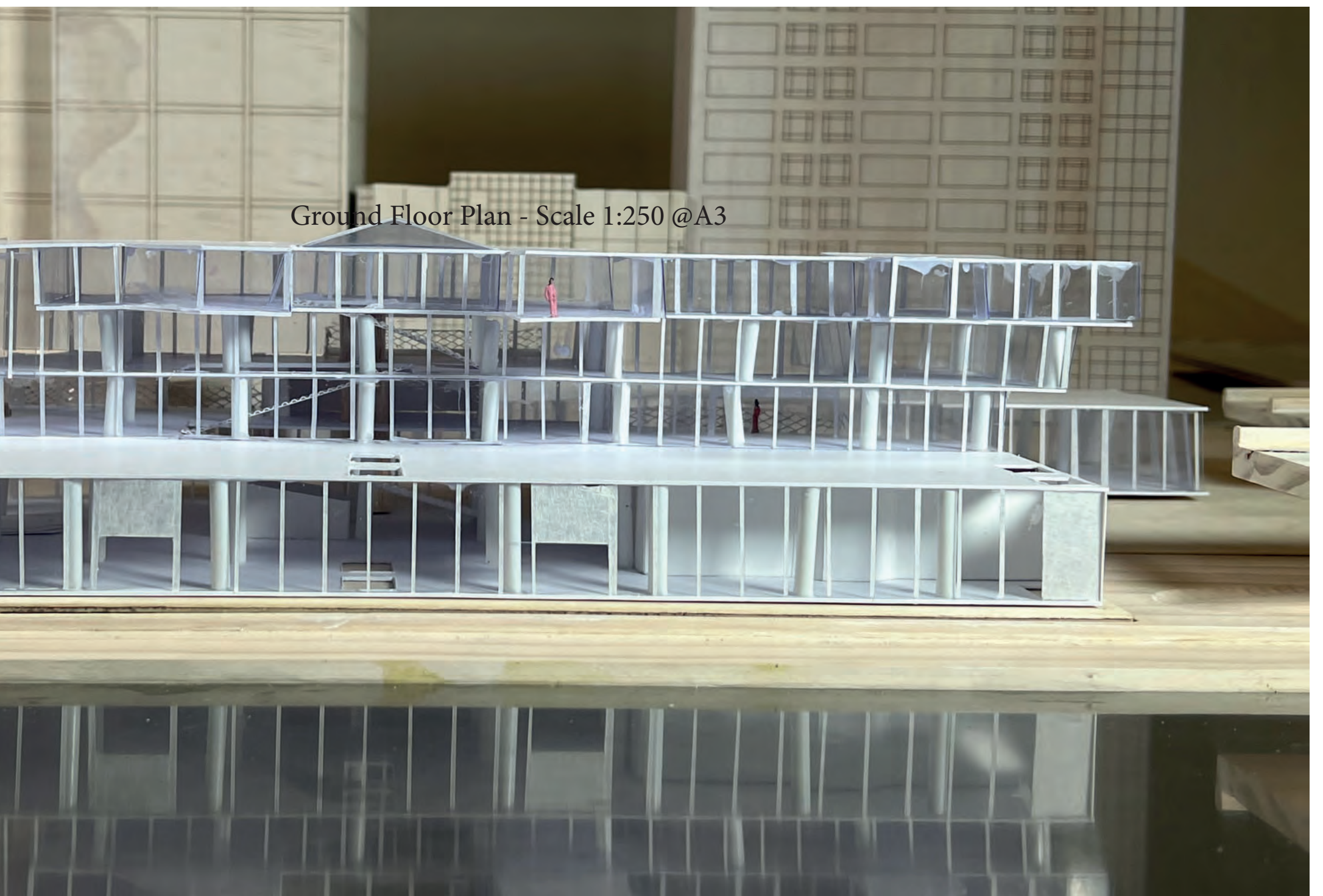


North-East Corner



South Elevation





Ground Floor Plan - Scale 1:250 @A3

South Site Elevation

East Elevation